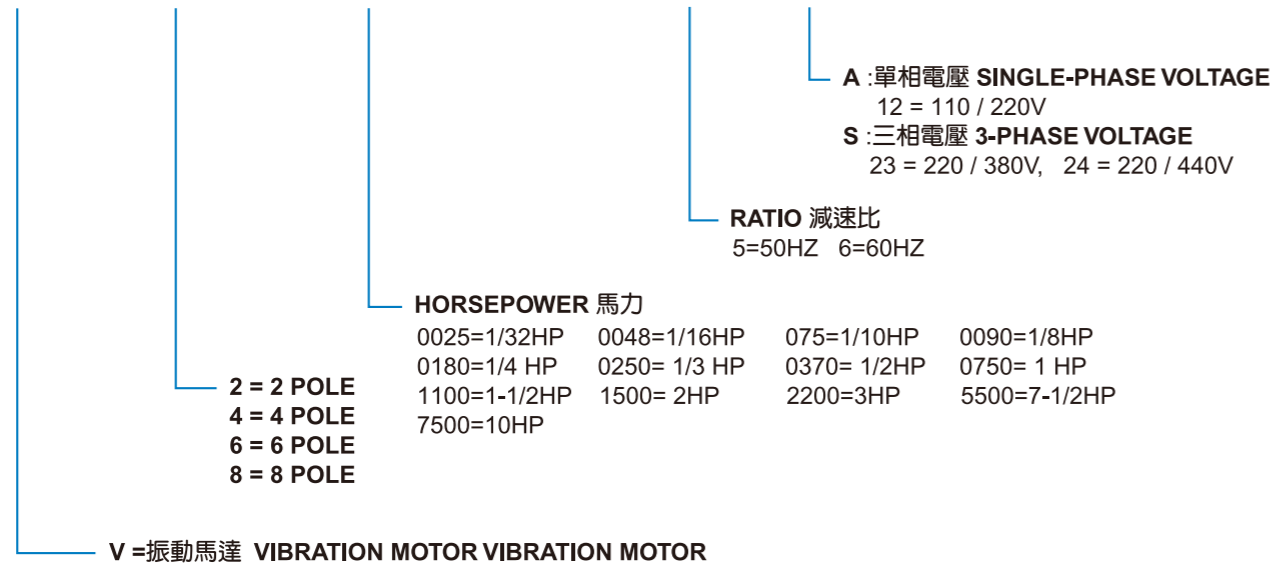


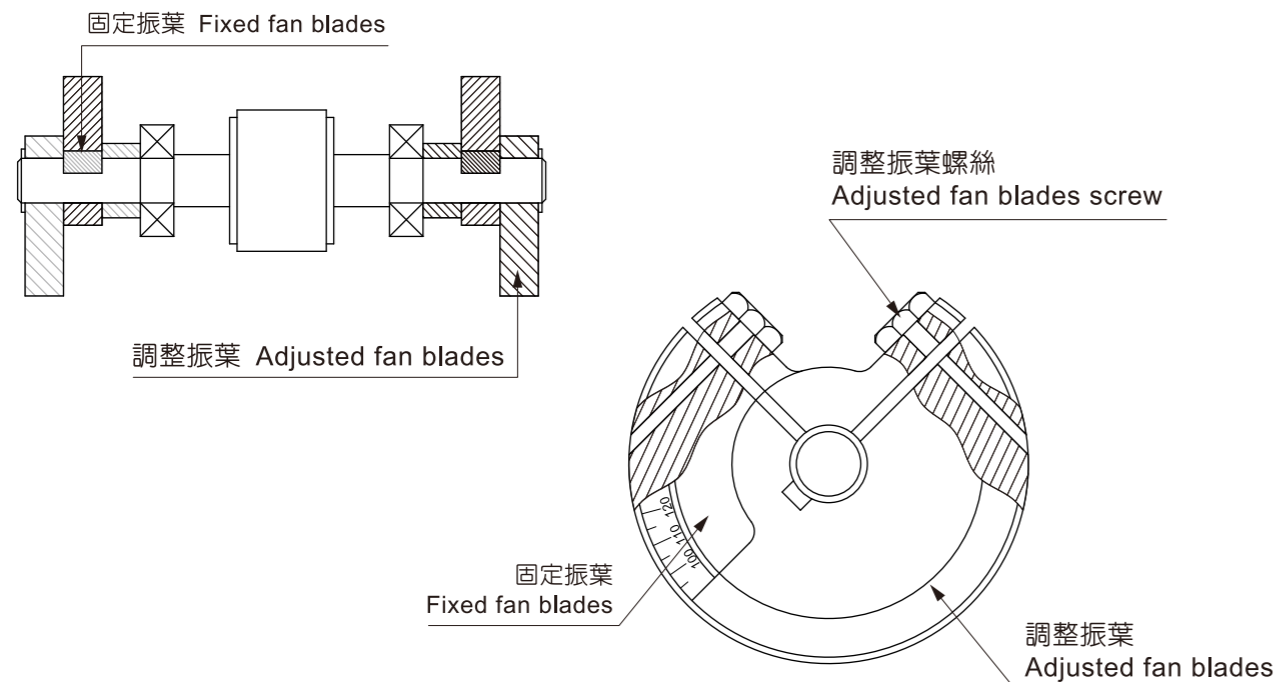
阪神振動馬達
VIBRATION MOTOR

V 2 - 0045 - 5 23



振幅調整及振動力出力百分比 Amplitude of vibration adjusting:

- 兩側調整振葉與固定振葉之角度，可加減變換與所需振動力配合，如圖所示：
- The angle between adjusting blade and steady blade is changeable to fit the vibration energy as showed in map.



振葉詳細圖 Detail map of blades

平面總圖 General Plan

振動力百分比 Vibration Percentage	100%	93%	71.5%	40.5%	12.5%
兩側振葉外型 An outer shape with vibrating Blades at its two-lateral sides					
振葉角度 Blade angle	180°	135°	90°	45°	0°

安裝調整注意事項:

- 1.調整振動力之後，必須固定調整螺絲，以防振葉彈出之危險，兩側振葉須調整一致，確保使用壽命。
- 2.正常使用下隨時注意腳架固定螺絲，及延長出口線是否固定妥當。
- 3.選擇馬達基座，須考慮基座張力強度是否足夠，以免破壞振動機本體。
- 4.正常使用下，須以運轉3000小時保養一次。

Indications of instalment and adjusting:

- 1.After adjusting the vibration force, the adjustment screw must be firmly tightened to prevent the hazardous ejection of the vibrating blades. The double-edged vibrating blades should be fully adjusted to ensure the usable service life.
- 2.During normal use. Be sure that the frame leg anchor screws and the protruding extension cord are properly secured.
- 3.When selecting a mounting base for the motor, the strength of the mounting base must be adequate enough to prevent damaging the vibrator mechanism.
- 4.Under normal usage conditions, maintenance should be conducted once every 3,000 hours of operation.

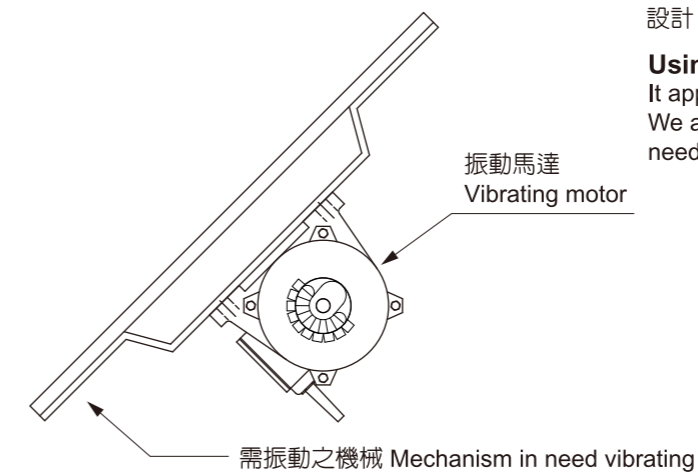
■安裝詳細圖 Detailed Installation Drawing

適用範圍:

特別適用漏斗，使用效果良好，配合場地所需，亦生產特殊設計。

Using directions:

It applying especially for funnel with good effectiveness. We also design specially items for fitting the places as needed.



馬達安裝角度與振動方向 Motor installation angle and vibration direction

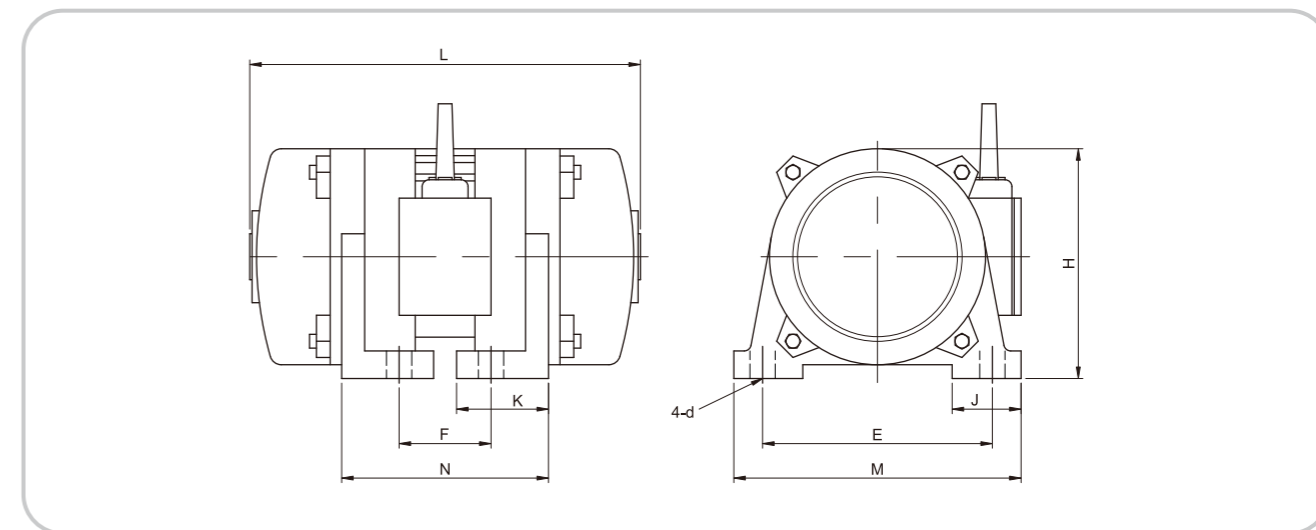
機械型式 Mechanical Type	振動方向 Vibrating Direction	使用構造說明 Description of Application Structure
		<p>兩部振動馬達對稱分裝在機械左右二端，使其產生同向之直線振動，依振動馬達安裝角度不同，可得不同投射角來達成機台所須之作動。</p> <p>The two vibration motors are installed respectively on the left and right side of straight-line vibration in the same direction. By varying the installation angles of the vibration motors different projection angles can be achieved to meet the operating requirements of the machine platform.</p>
		<p>在機械上端用兩部振動馬達分裝於上，其內部有多層網之構造，來達成規格細分之功能，可得較佳之效果。</p> <p>The two vibration motors are individually installed on the upper end of the mechanism, and inside is a multi-layer sieve net structure that functions at high efficiency according to granularity specifications.</p>
		<p>在機械下端安裝一部振動馬達，藉安裝角度，使其產生圓周運動，達成篩選及輸送之功能，依其傾斜角之調整，達到不同之功用。</p> <p>One vibration motor is installed on the lower end of the mechanism such that the installation angle enables the production of circular movement for sifting and conveyance functions, wherein the different functions are based on the adjusted angle.</p>
		<p>振動馬達依此安裝型式，可產生共振功能，利用變頻，自由的變換供給量及振幅，此型式最適合食品業及化學業用。</p> <p>The vibrations produced by the vibration motor depends on the particular model installed frequency variance is utilized to change the outputted vibration intensity and amplitude. This model is most appropriate for use in the food and chemical industries.</p>
		<p>利用直立是振動馬達之功用，使篩網產生三次元之運動，對細微粉立可達良好之篩選效果，且不會產生阻塞篩網現象，可作濕式篩選機使用。</p> <p>Utilizing a vertical-type vibration motor enables the sieve to produce a three-cycle movement that is quite effective for sifting powder of fine and ultra-fine granularity and furthermore, without clogging the sieve net: can also be utilized in wet-type sieve sifters.</p>



2 POLE

尺寸表 Dimension

型號 Model	馬力 HP	振動力 (kg) Vibration power	E	F	M	N	J	K	L	H	d	概略重量 kg
V2-0025	1/32	30	92	33	110	60	23	30	140	75	7	1.5
V2-0045	1/16	50	100	60	125	90	30	40	170	140	11	3.5
V2-0075	1/10	80	130	50	160	100	40	36	210	170	11	12
V2-0090	1/8	100	130	50	160	100	40	36	210	170	11	13
V2-0180	1/4	260	150	90	180	135	46	40	268	190	14	18
V2-0250	1/3	360	150	90	180	135	46	40	268	190	14	20
V2-0370	1/2	600	180	123	230	170	50	55	330	200	14	25
V2-0750	1	1000	220	180	270	220	70	80	370	230	18	38
V2-1100	1-1/2	1600	220	180	270	220	70	80	370	230	118	39
V2-1500	2	2000	220	180	270	220	70	80	370	230	18	40
V2-2200	3	3000	260	140	330	240	70	90	442	280	28	75
V2-3700	5	5000	260	140	330	240	70	90	442	280	28	83



2 POLE 適用機械範圍

1. 產業界儲料斗及下料輸送管之防架橋振動。
2. 粉粒體振動填充幫包裝機之落實填充振動。
3. 空氣污染防治之集塵裝置用粉塵振落振動。
4. 電子、電腦業的非破壞性振動試驗機。
5. 土木工程之水泥外模振動用。如隧道壁、涵箱、下水道蓋、橋樑、電線桿、預鑄環片、捷運系統之水泥製品等。
6. 環氣樹脂製品、PCB等脫除氣泡之振動。

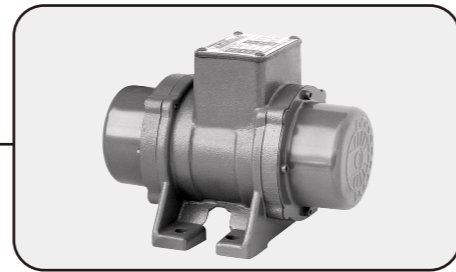
2 POLE Mechanical vibration applications:

1. Preventing coagulation in materials storage bins and feeder conveyance pipes used by manufacturers.
2. Settling powder and other fine granular material in containers to maximise load capacity.
3. Dislodging dust and partialities into collectors to control air pollution.
4. Non-destructive vibration testing machines used in the computer and electronics industries.
5. Vibrating poured concrete forms such as those used for tunnel walls, enclosures, sewer covers, bridges, power-line poles, precast round slabs and mass rapid transit systems.
6. De-bubbling epoxy resin products such as PCBs, etc.

TPG

振動馬達

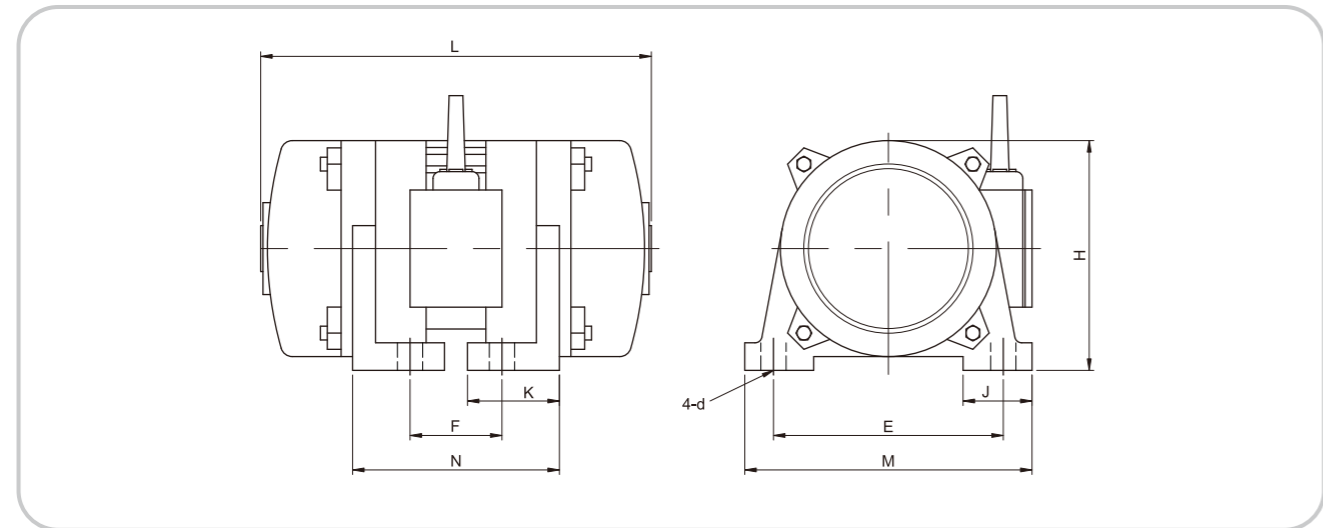
● MOTORS & DRIVES ● VIBRATION MOTOR

4 POLE

尺寸表 Dimension

mm

型號 Model	馬力 HP	振動力 (kg) Vibration power	E	F	M	N	J	K	L	H	d	概略 重量 kg
V4-0045	1/16	30	100	60	125	90	30	40	170	140	11	3.5
V4-0075	1/10	60	130	50	160	100	40	36	210	170	11	13
V4-0090	1/8	100	150	90	180	135	45	40	268	190	14	16
V4-0120	1/6	150	150	90	180	135	45	40	268	190	14	18
V4-0180	1/4	400	180	120	220	185	55	52	325	190	18	23
V4-0250	1/3	550	180	120	220	185	55	52	325	190	18	23
V4-0370	1/2	900	220	120	280	205	65	70	330	240	22	45
V4-0750	1	1800	260	140	330	240	70	90	445	280	28	82
V4-1100	1-1/2	2500	260	140	330	240	70	90	525	280	28	85
V4-1500	2	3500	310	180	370	280	85	75	495	315	28	93
V4-2200	3	5000	360	210	450	335	110	105	570	360	35	183
V4-3700	5	7500	380	290	505	420	140	150	680	450	41	310
V4-5500	7-1/2	8500	440	320	580	515	150	160	800	500	54	410
V4-7500	10	10000	440	320	580	515	150	160	1000	500	54	500

**4 POLE 適用機械範圍:**

1. 小型儲料筒槽架橋防止用之振動排料器。
2. 粉粒體振動填充包裝機。
3. 雙馬達共振式之振動瀝水機。
4. 鑄造廠用定量配料輸送及篩砂機。
5. 液體專用振動過濾機。適用於汙泥、紙漿...等。
6. 靜電植毛用振動過濾機。
7. 塑膠粒振動篩選機，處理量6 Ton/小時以下。
8. 中小型振動輸送、篩選機，長度5公尺，寬度1公尺以下效果較佳。五金零件、食品、化學原料、砂石廠、礦場...等適用。

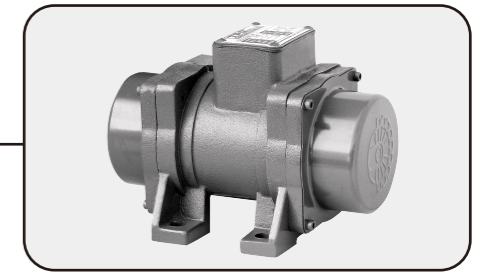
4 POLE Mechanical vibration applications:

1. Preventing dispenser clogging on small-size materials storage tanks.
2. Settling powder and other fine granular material in containers.
3. Dual motor resonance-type bilge machines.
4. Materials conveyance and sandblasters in casting plants.
5. Vibrating liquid filtration machines for sludge, paper pulp, etc.
6. Vibration-type electrostatic filters.
7. PVC granule sifting machines having a processing capacity of less than six tons/hour.
8. Medium-and small-size conveyor and sifting machines; best for machines having a length of less than five meters and wide of less than one meter.

TPG

振動馬達

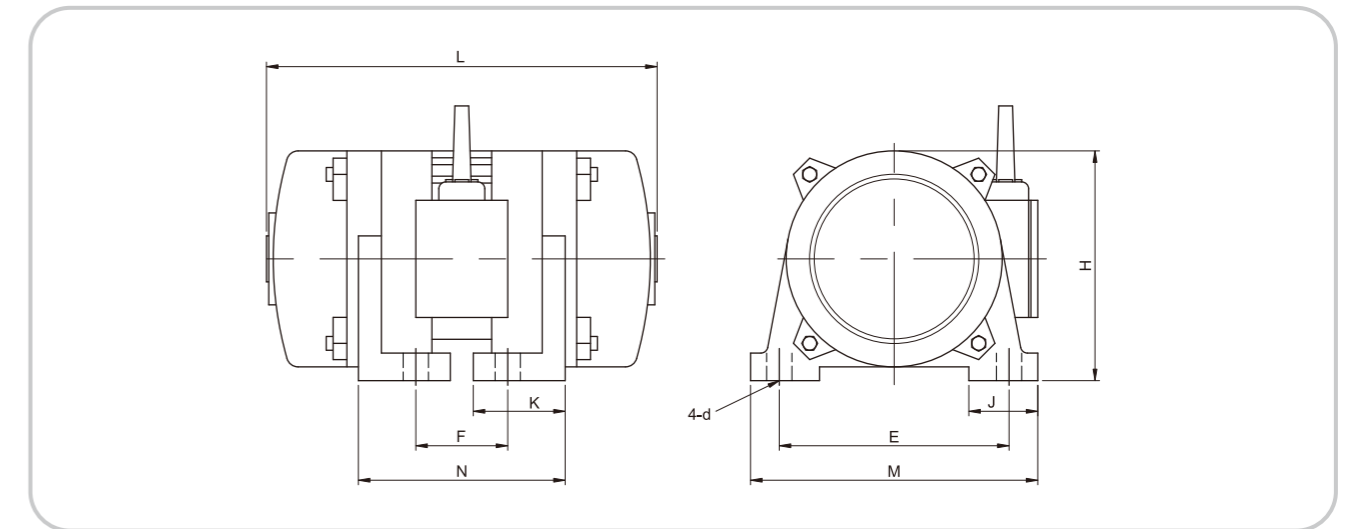
● MOTORS & DRIVES ● VIBRATION MOTOR

6 POLE

尺寸表 Dimension

mm

型號 Model	馬力 HP	振動力 (kg) Vibration power	E	F	M	N	J	K	L	H	d	概略 重量 kg
V6-0250	1/3	350	180	120	220	185	55	52	325	190	18	25
V6-0370	1/2	800	220	120	280	205	65	70	330	240	22	48
V6-0750	1	1200	260	140	330	240	70	90	525	280	28	85
V6-1100	1-1/2	1800	260	140	330	240	70	90	525	280	28	88
V6-1500	2	2500	310	180	370	280	85	75	495	315	28	101
V6-2200	3	3800	360	210	450	335	110	105	570	360	35	190
V6-3700	5	5000	380	290	505	420	140	150	680	450	41	310
V6-5500	7-1/2	7500	440	320	580	515	150	160	800	500	54	430
V6-7500	10	10000	440	320	580	515	150	160	1050	500	54	540

**6 POLE 適用機械範圍:**

1. 中、大型儲料筒槽架橋防止用之振動排料器。
2. 粉粒體用垂直振動冷卻、輸送機。
3. 水冷、氣冷式振動冷卻機。
4. 鑄造廠用振動解模機，鑄砂回收振動冷卻篩選機。
5. 食品、化學（塑膠、聚酯粒）原料用振動篩選機。
6. 砂石場、礦場用振動輸送篩選機。
7. 中距離集料用振動輸送機。

6 POLE Mechanical vibration applications:

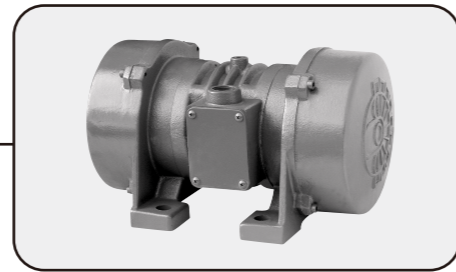
1. Preventing dispenser clogging on medium-and small-size materials storage tanks.
2. Vertical vibrating coolers and conveyors for granular materials.
3. Water or air type vibrating coolers.
4. Mold release machines, recirculating sandblasters, and cooling sifters in casting plants.
5. Vibrating sifters for food and chemical (plastic, PVC granules) raw material.
6. Conveyor sifter machines used in mineral extraction plants and mines.
7. Medium-distance material conveyors.

TPG

振動馬達

● MOTORS & DRIVES ●

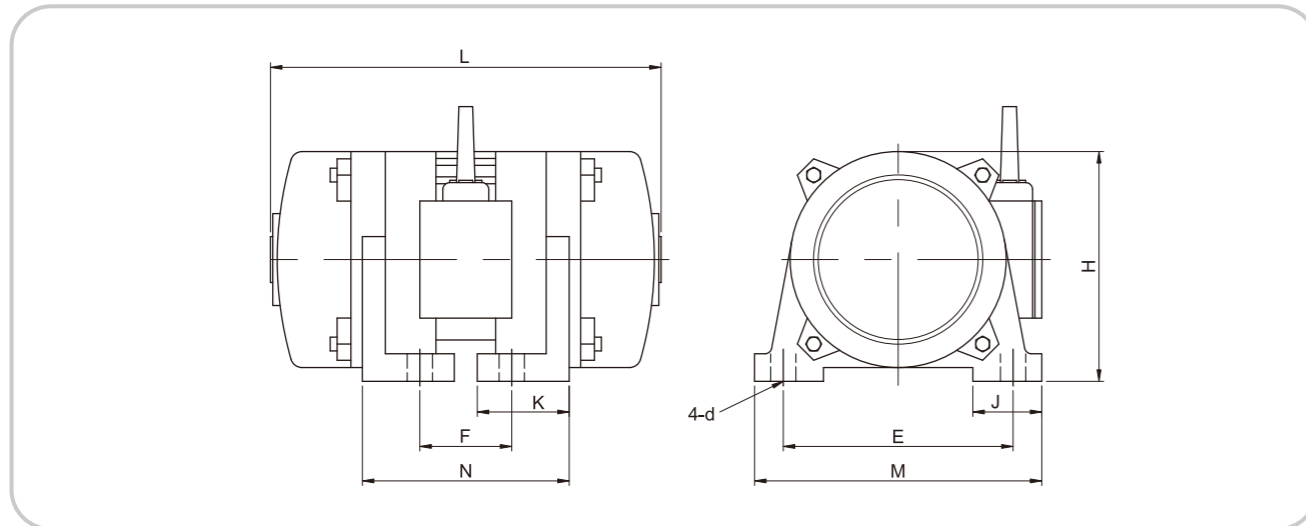
VIBRATION MOTOR

**8 POLE**

尺寸表 Dimension

mm

型號 Model	馬力 HP	振動力 (kg) Vibration power	E	F	M	N	J	K	L	H	d	概略 重量 kg
V8-0370	1/2	500	220	120	280	205	65	70	330	240	22	48
V8-0750	1	1000	260	140	330	240	70	90	525	280	28	88
V8-1100	1-1/2	1400	260	140	330	240	70	90	525	280	28	88
V8-1500	2	2000	310	180	370	280	85	75	495	315	28	101
V8-2200	3	2800	360	210	450	335	110	105	570	360	35	190
V8-3700	5	4500	380	290	505	420	140	150	680	450	41	310
V8-5500	7-1/2	6500	440	320	580	515	150	160	800	500	54	430
V8-7500	10	8500	440	320	580	515	150	160	1050	500	54	540

**8 POLE 適用機械範圍:**

- 1.大型振動填充包裝、輸送機。
- 2.濕式化學原料振動篩選、垂直振動冷卻機。
- 3.熱玻璃膏廢料水冷式振動輸送機。
- 4.食品、化學原料用振動乾燥、冷卻輸送機。
- 5.食品用振動清洗烘乾機、篩選機。
- 6.長距離集料用振動輸送機 (6公尺以上)。
- 7.地震模擬機 (震度可調式)。
- 8.慢速、長距離振動輸送機 (應用於電鍍件、鑄件...等)。
- 9.大型物件非破壞性振動試驗機。

8 POLE Mechanical vibration applications:

- 1.Large-scale packing-conveyor machines.
- 2.Vibrating sifters and vertical coolers for wet chemical ingredients.
- 3.Heated glass waste water cooling conveyors.
- 4.Food and chemical raw materials dehydrating and cooling conveyors.
- 5.Food cleaning, drying and sifting machines.
- 6.Long-distance material conveyors (six meters or less).
- 7.Earthquake-simulation machines (adjustable magnitude).
- 8.Low-speed, long-distance conveyors (utilized for electroplating, casting, etc.)
- 9.Non-destructive vibration testing machines for large objects.

TPG

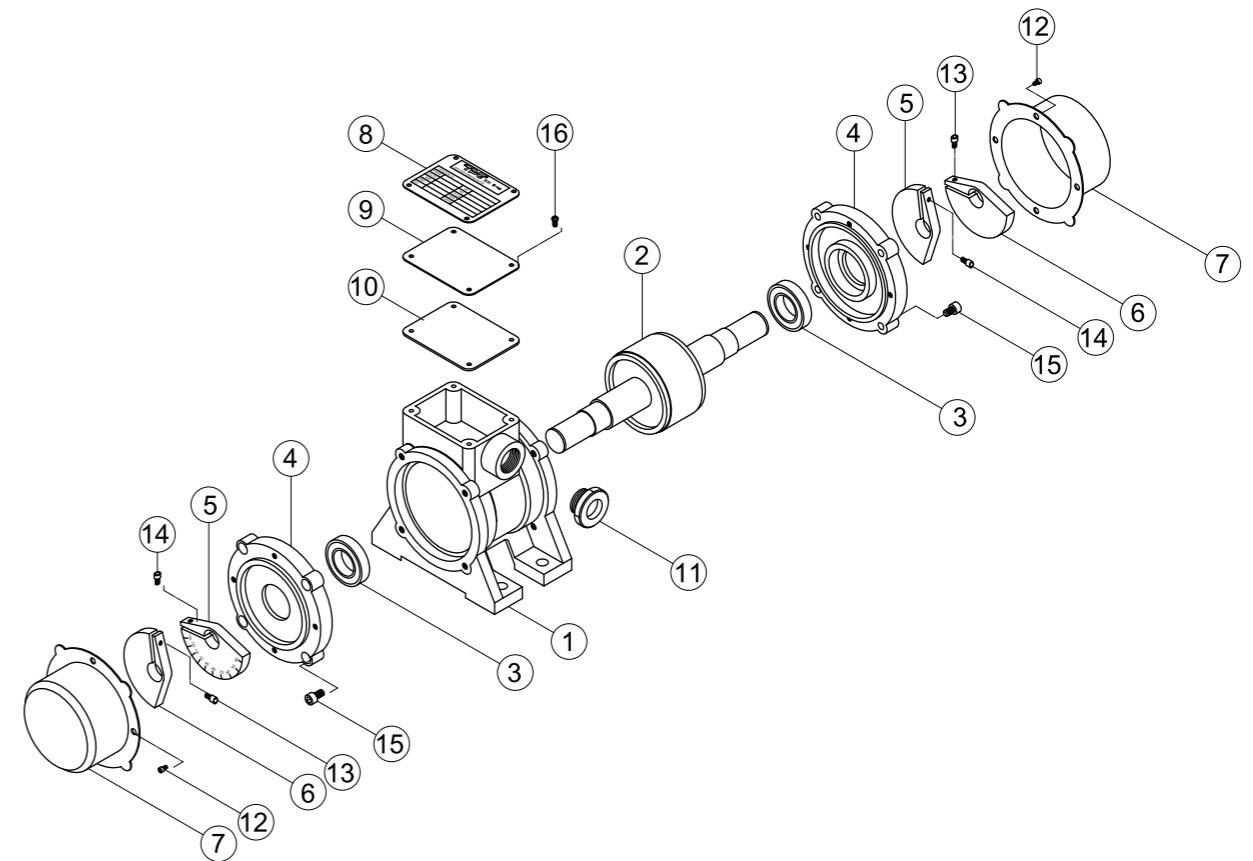
振動馬達 VIBRATION MOTOR

● MOTORS & DRIVES ●

分解圖 EXPLOSION DRAWING

零件表 Part list

順號 NO.	品名	Description	順號 NO.	品名	Description	順號 NO.	品名	Description
1	機殼	House	6	配重片	Weight block	11	出線珠	Cord outlet
2	馬達心軸	Armature	7	封蓋	Motor cover	12	圓頭十字螺絲	Round head screw
3	軸承	Bearing	8	馬達銘牌	Nameplate	13	套筒螺絲	Socket screw
4	馬達蓋	Endplate	9	接線蓋	Conduit boc lid	14	套筒螺絲	Socket screw
5	配重片	Weight block	10	墊片	Gasket	15	套筒螺絲	Socket screw



註:

- 1.以上分解圖為通用模式，內部零件會因機種不同會有小部份形狀不同。
- 2.需要維修零件，請註明機種減速比及零件順號。

Remark:

1. Above explosion drawing is the standard one, there will be some different parts due to different model. "
2. Please mark the part name and full catal. Number of TPG if require the repair service to TPG.

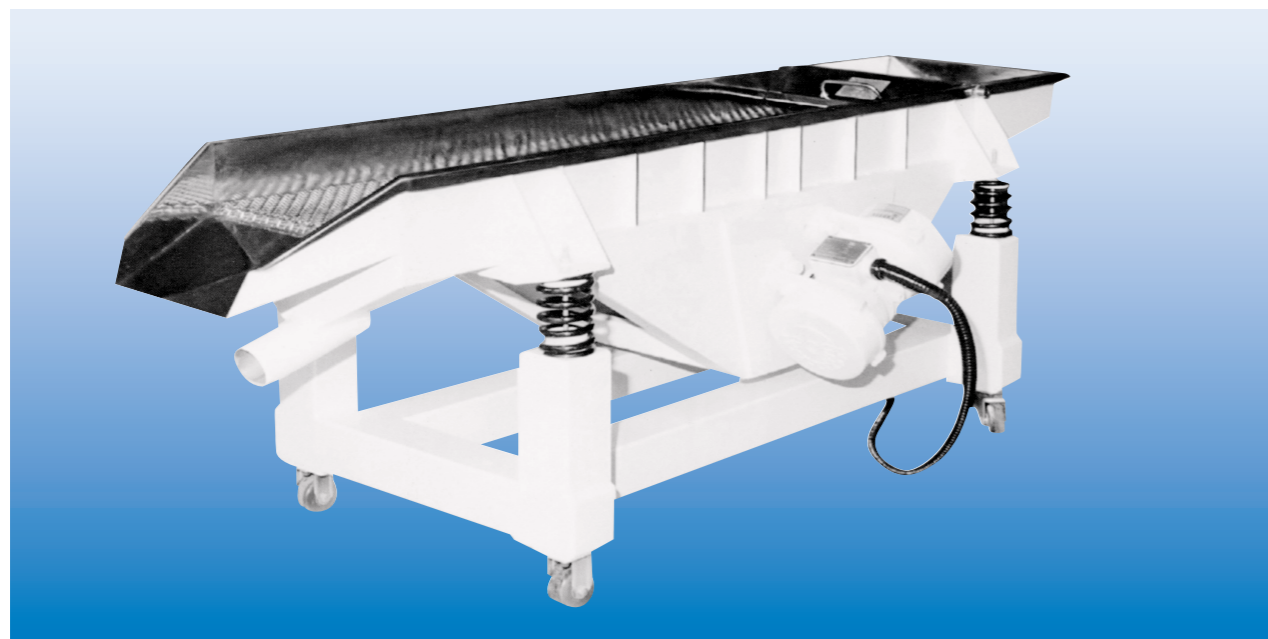
立式振動馬達 Vertical Vibration Motor



※產品規格：1/2 HP - 25HP
 ※應用機械：三次元振動研磨機
 圓形振動篩選機
 振動混合攪拌機

- **Product Specification** : 1/2 HP - 25HP
- **Application** : 3 Dimensions vibration grinding machine
 Round shape vibration sifter
 Vibration mixing agitator

振動輸送篩選機 Vibration Transportation Sieving Machine



※功能：適合輸送、篩選、烘乾、冷卻、清洗...等多種用途。
 ※適用：電子產品、螺絲產品、針車零件、鈕扣加工品、電鍍產品及各類零件。
 ※特點：噪音低，適用各種產業環境。
 ※處理量：100KG/H ~ 100T/H。
 ※可依客戶產品需求設計訂製。

- **Function** : Can be applied on transferring. Sifting, cooling, washing ... etc.
- **Application** : Electronic products screw products, knitting machine parts, button processing, electroplating, products and other products.
- **Features** : Low noise, can be applied on different industrial environment.
- **Capacity** : 100KG/H ~ 100T/H.
- The product can be design and manufactured customer's request.

氣壓式振動平台 The barometric pressure vibrates the platform



- ※適用：
1. 電子、電腦業零件測試。
 2. 物料填充。
 3. 地震模擬。
 4. 食品、化工產品測試。
 5. 各種產品非破壞性振動測試。
- ※特點：
1. 檯面振動勻度佳、且側向運動小。
 2. 可無段調整振幅。
 3. 機台不會搖晃且運轉噪音低。
 4. 24小時連續運轉達30000小時以上。
 5. 檯面大小可依需求設計。

- Application :**
1. Electronic computer parts test.
 2. Material stuffing.
 3. Earthquake mimicry.
 4. Food, chemistry product test.
 5. Products non-damage vibration test.

- Features :**
1. Table vibration even-degree is good and side movement is small.
 2. The vibration rang can be adjusted sleeplessly.
 3. The table won't be shaking and little noise in running.
 4. Can be operated 24 hours continuously for more than 30000 hours.
 5. The table size can be design upon customers request.

慣性振動平台 Inertial Oscillation Platform



- ※適用：
1. 電子、電腦業零件測試。
 2. 物料填充。
 3. 地震模擬。
 4. 食品、化工產品測試。
 5. 各種產品非破壞性振動測試。
- ※特點：
1. 檯面振動勻度佳、且側向運動小。
 2. 可無段調整振幅。
 3. 機台不會搖晃且運轉噪音低。
 4. 24小時連續運轉達30000小時以上。
 5. 檯面大小可依需求設計。

- Application :**
1. Electronic computer parts test.
 2. Material stuffing.
 3. Earthquake mimicry.
 4. Food, chemistry product test.
 5. Products non-damage vibration test.

- Features :**
1. Table vibration even-degree is good and side movement is small.
 2. The vibration rang can be adjusted sleeplessly.
 3. The table won't be shaking and little noise in running.
 4. Can be operated 24 hours continuously for more than 30000 hours.
 5. The table size can be design upon customers request.

齒輪減速機
GEAR MOTOR

蝸輪減速機
WORM GEAR SPEED REDUCER

螺旋齒輪減速機
SPIRAL GEAR BOX

無段變速機
VARIABLE SPEED DRIVER

振動馬達
VIBRATION MOTOR

轉矩馬達
TORQUE MOTOR

鼓風機
PRESSURE BLOWER

煞車器、離合器
MAGNETIC CLUTCH & BRAKE

其他
OTHER



Horizontal lines for form input

訂購須知 GENERAL NOTICES

- 1. 型式 TYPE :
2. 馬力 HORSEPOWER :
3. 減速比 RATIO :
4. 電壓 VOLTAGE :
5. 頻率 HZ :

